

ACCOMMODATION

Grand Inna Kuta provides you with two styles of building, Bali Wing and Beach Wing and make a total of 322 rooms. Featuring different uniqueness the Beach Wing boasts modern and minimalist designed Deluxe rooms with beautiful sea, pool, and garden view whilst Bali Wing offers contemporary Balinese style after getting rejuvenation.

Beach Wing

Building Room Type	Floor Level	Total Rooms
U Wing		
Deluxe	2	4
Deluxe	3	4
Junior Suite	2	1
Junior Suite	3	2
Grand Suite	2	1
Grand Suite	3	1
Total		13
A Wing		
Deluxe	2	12
Deluxe	3	14
Deluxe Sea View	4	14
Total		40
B Wing		
Deluxe	1	20
Deluxe	2	39
Deluxe	3	36
Deluxe	4	12
Total		107
Deluxe Pool Side		28
Deluxe Sea View		4
Total		48
Executive Suite Garden View	2	4
Executive Suite Sea View	3	4
Executive Suite Sea View	4	4
Total		12
Total Beach Wing		220

Room Facilities

- 32 inch Flat TV
- Bathroom
- Mini Fridge
- Hairdryer
- IDD Telephone
- Individual Controllable AC
- Luggage Rack
- Safe Deposit Box
- Satellite TV Channel
- Sofa Bed (Beach Wing)
- Tea & Coffee Maker
- WiFi
- Hand Sanitizer

Bali Wing

Building Room Type	Floor Level	Total Rooms
A Wing (All Rooms with Balcony)		
Grand Deluxe Pool Side	1	17
Grand Deluxe	2	16
Grand Deluxe	3	16
Total		49
B Wing		
Grand Deluxe	1	17
Grand Deluxe	2	16
Grand Deluxe	3	16
Total		49
Family Room	2	2
Family Room	3	2
Total		4
Total Bali Wing		102

Services & Facilities

- ATM Booths
- Baby Cot
- Parking Space
- Electric Current 220V/50 Cycles
- Doctor On Call
- 24 Hour Manager On Duty
- Florist
- Laundry, Pressing & Dry Cleaning
- Lost & Found
- Luggage Room
- Major Credit Card Accepted
- Transportation Service
- Postal Service
- Tour Desk
- WiFi in The Hotel Area

BEACH WING

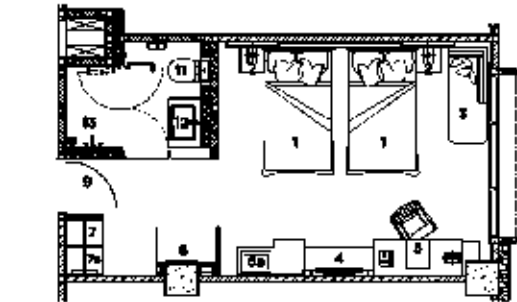
DELUXE ROOM



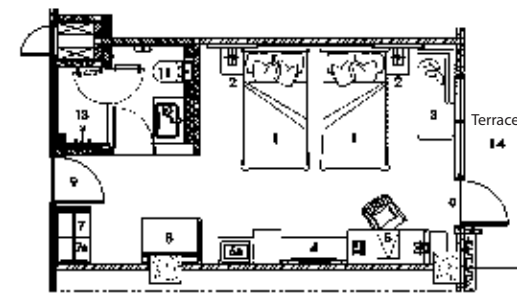
Deluxe



Pool View



Sea View



Pool Side

Bed Room : 23 (M²)
Bath Room : 5 (M²)
Terrace : 5 (M²)

JUNIOR SUITE



Bed Room : 18 (M²)
Living Room : 19 (M²)
Bath Room : 14 (M²)



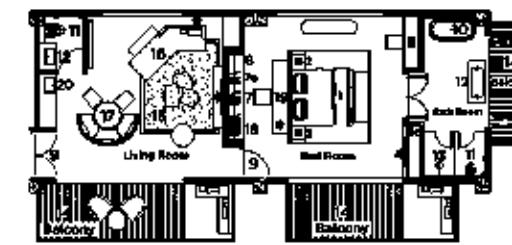
EXECUTIVE SUITE



Bed Room : 16 (M²)
Living Room : 19 (M²)
Bath Room : 12 (M²)
Balcony : 27 (M²)



GRAND SUITE

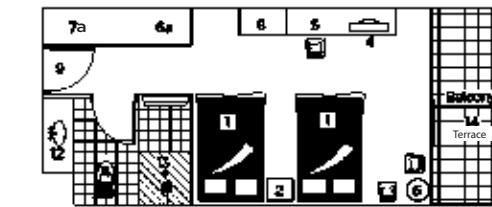


Bed Room : 34 (M²)
Living Room : 35 (M²)
Bath Room : 13 (M²)
Balcony : 4 (M²)



BALI WING

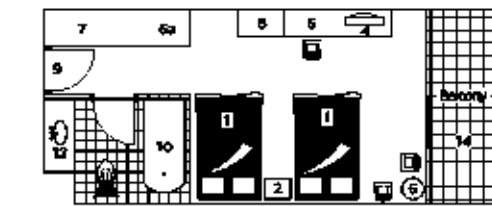
GRAND DELUXE



Bed Room : 22 (M²)
Bath Room : 4 (M²)
Balcony : 5 (M²)



Pool Side

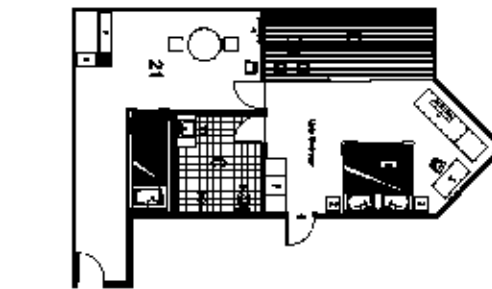


Bed Room : 22 (M²)
Bath Room : 4 (M²)
Balcony : 5 (M²)



Grand Deluxe

FAMILY ROOM



Bed Room + Kid's Area : 36.5 (M²)
Bath Room : 5 (M²)
Balcony : 9 (M²)



Spesification

- | | | |
|-------------------|------------------------------------|-----------------------|
| 1. Master Bedroom | 5. Dressing Table | 9. Luggage Rack |
| 1a. Bunkbed | 6. Tea/Coffee Table | 10. Iron & Iron Board |
| 2. Bedside Table | 7a. Tea/Coffee Maker & Mini Fridge | 11. Writing Table |
| 3. Sofa | 8. Wardrobe | 12. Balcony |
| 4. TV | 8a. Safe Deposit Box | |

RESTAURANTS & BARS



Breeze Resto



Sunken Bar



Warung Senggol



Salero Kuta



Beach Bar



Rooftop



Kelapa Bar



Kopi Bucu



Headquarters

RECREATION FACILITIES



Sunset Pool



Kids Corner



Kelapa Pool



Sunken Pool

MICE



MEETING

VENUE	DIMENTION / HEIGHT	ROUND TABLE	THEATRE STYLE	CLASS STYLE	U - SHARE	STANDING
BALANGAN ROOM	20.8 X 14.7m/7.9m	190	300	200	168	400
BALE BANJAR	330.00m2/3.75m	230	376	240	174	400
BALE PESAMUAN	9 x 6.75 m/3.00m	25	45	35	30	60
BALE KUTA	11 x 7.5 m/3.00m	45	70	45	30	80
BALE LEGIAN	11 X 5.5 m/3.00m	50	70	50	45	40
BALE PESABAN I	8 x 7.5 m/3.00m	32	30	40	25	40
BALE PESABAN II	17 x 7.5 m/3.00m	80	130	80	60	100
BALE PESABAN III	11 x 7.5 m/3.00m	45	80	45	40	80
BALE PESABAN IV	11 x 7.5m/3.00m	45	80	45	40	80



Balangan Room



Bale Banjar

OUTDOOR EVENT



Kelapa Roof



Beach



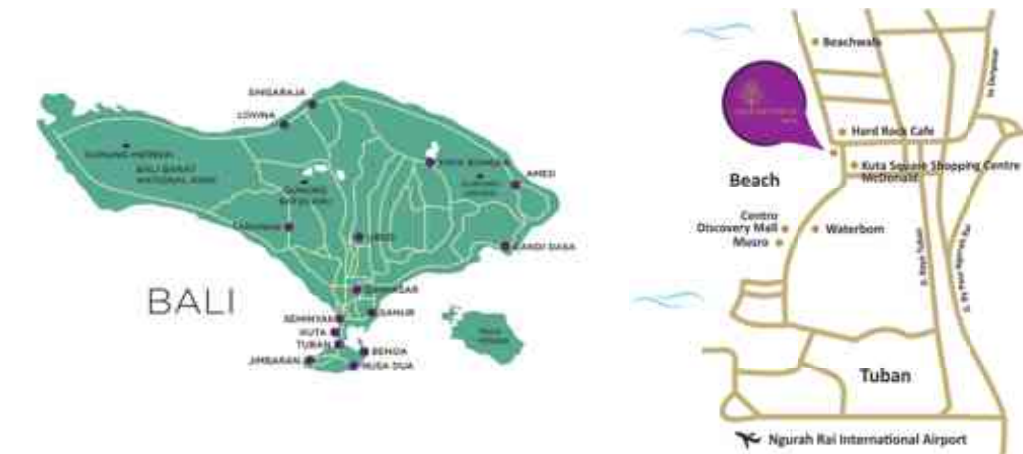
Rooftop

LOCATION

- Lobby
- Balangan Room, 3rd floor
- Breeze Resto, 2nd floor
- Putri Duyung Cafe
- Sunken Bar
- Kelapa Pool Bar
- Kelapa Pool
- Sunset Pool
- Sunken Pool
- Bale Banjar (2nd floor)
- Bale Pesamuan
- Bale Kuta (2nd floor)
- Bale Legian (ground floor)
- Bale Pesaban (2nd floor)
- Elevator 1 & 2
- Elevator 3
- Elevator 4
- Elevator 5
- ATM
- Jimbaran Lounge (2nd floor)
- Tour Desk/North Bridge (2nd floor)
- South Bridge (2nd floor)
- Headquarters / HQ Beach Club (ground floor)
- Rooftop (4th floor)
- Beach Access
- Kids Corner (2nd Floor)
- Kopi Bucu
- Warung Senggol



Perfectly located in Kuta with direct access to the white sandy beach besides a mere 5-10 minutes walk to the shopping centre and all what Kuta has to offer.



HOTEL'S DISTANCE	KILOMETERS	ESTIMATION	HOTEL'S DISTANCE	KILOMETERS	ESTIMATION
International Airport	3	15 minutes	Nusa Dua	10	25 minutes
Denpasar	6	20 minutes	Sanur	15	30 minutes
Jimbaran	5	15 minutes	Ubud	25	45 minutes



Scan Me!

GRAND INNA KUTA
 Jl. Pantai Kuta No. 1, Br. Pande Mas, Kuta 80361, Bali
 T. +62 361 751361 F. +62 361 751362
 E. info@grandinnakuta.com / reservation@grandinnakuta.com
 www.grandinnakuta.com

MANAGED BY **HIG**

